



**Meadowside Primary School**  
**Behaviour Policy**

**Reviewed: March 2021**

**Next Review: September 2021**

Here at Meadowside Primary School we believe that good behaviour and discipline are essential to successful teaching and learning. In this policy we set out expectations which reinforce a **positive** approach to managing children's behaviour.

Children benefit most where adults adopt a consistent and positive approach to the management of their behaviour. By establishing clear boundaries according to the child's level of understanding, children become aware of their settings, routines and procedures and know what is expected of them.

### **OUR PRINCIPLES**

- Every teacher has the right to teach free from disruptive behaviour.
- Every child has the right to learn undisturbed by disruptive behaviour.
- Everyone has the right to be safe.

We believe that **every member** of the school community has a responsibility for behaviour and everyone has the right to feel valued and respected. All staff and children have an entitlement to achieve their maximum potential in a safe and secure environment where effective teaching and learning can take place. It is our belief that good behaviour needs to be consistently and positively encouraged and valued.

### **AIMS**

- 1 Provide the basis for the development of a positive, whole-school, ethos towards behaviour.
- 2 To develop collaborative and co-operative relationships between children and between children and all adults
- 3 To encourage children to acquire increasing independence and to take on responsibility for their own actions appropriate to their age and maturity
- 4 To foster self-esteem
- 5 Provide guidance upon the implementation of a consistent approach to positive behaviour management
- 6 To strive for high standards of behaviour which contribute towards effective learning
- 7 To develop a calm and orderly atmosphere when moving around school
- 8 Provide guidance and support for staff when dealing with inappropriate behaviour
- 9 To reflect our ambition to become an Outstanding school

## **ROLES AND RESPONSIBILITIES**

### **We expect parents:**

- To agree to and sign the Meadowside Home/School Agreement.
- To support children in all aspects of school life and to praise success.
- To ensure that their children arrive on time each day, with the correct clothing and equipment to enable them to take part in the full curriculum.
- To attend parental consultations to ensure that home and school are working together to benefit each child.
- To uphold the values and ethos of the school, including respecting and following our expectations of behaviour.

### **It is expected that staff will:**

- Ensure that children are emotionally and physically safe in school (KCSIE 2019 Part One)
- Ensure that all children receive a broad, balanced and stimulating curriculum at the appropriate level, using suitable materials
- Make explicit, in a constructive and positive way, what behaviour is expected of children and what is unacceptable, with a particular emphasis on our Golden Rules
- Challenge inappropriate/unacceptable behaviour **with strategies and support to help a child modify their behaviour or explicitly teach expectations.**

### **It is expected that children will:**

- Attend school, be punctual, wear school uniform, be organised and have the appropriate equipment for lessons
- Do their best at all times and take pride in their work
- Show respect, care and consideration for others and manage their own behaviour accordingly
- Listen when teachers and others are talking.
- Show respect for the school environment.
- Move around school in a calm, orderly and considerate way
- Follow the school's Golden Rules and expectations.

### **It is expected that the Governing Body will:**

- Support the school in its efforts to address issues related to behaviour management.
- Monitor this policy regularly to ensure it reflects our development towards outstanding practice.

The governing body will evaluate the impact of this policy through:

- Monitoring number of fixed-term and permanent exclusions (Head's Reports termly)
- Monitoring instances of bullying and action taken (**please refer to our anti bullying policy for our definition and protocol**)
- Attending Celebration Assembly and other curriculum events

### **Rewards**

Class Teachers have a range of rewards used as recognition and reinforcement of good behaviour, ranging from contacting parents, celebrating with staff, house points (see appendix 1), verbal praise and stickers, to a special mention in Friday's Celebration Assembly. At the end of each week in our Friday assembly we celebrate. Each member of staff nominates one or two children for a special mention; a good piece/collection of work, a particular breakthrough, a sustained effort, kindness and helpfulness or an improvement in behaviour. All the nominees come out to the front and receive a certificate.

The regular award of positive consequences is central to attaining the desired goal of a co-operative working atmosphere.

### **Sanctions**

We have created a flowchart which has been shared with all children, explaining the consequences of any negative or disruptive behaviours at Meadowside.

### **Serious or persistent misconduct**

For the majority of children the above system will be sufficient to ensure good levels of behaviour. However, for some individuals, it will be necessary to move beyond this approach due to the nature of their behavioural problems. In such circumstances it is likely that parents would be contacted by the Headteacher at an early stage, to discuss an appropriate way forward to improve their child's behaviour. Details of these procedures will be found in the school's Exclusion Policy.

### **Inclusion**

In the case of children identified as having additional needs which impact on behaviour, the school, acting in partnership with the parents of the child concerned, will draw up individual

targets. These will be designed to deliver improvements in the child's behaviour over a specified period of time. Whenever possible, the school will seek help and guidance from external agencies and the Local Authority. While this may involve a more sensitive interpretation of this policy, unacceptable behaviour will not be allowed to remain unacknowledged.

## **Whole School Rules**

Our Golden Rules are as follows;

### **At Meadowside we all...**

- **Try our best in everything we do**
- **Care for the environment and all the living things around us**
- **Show respect for each other in our words and our actions**
- **Look after our school equipment, our own and other people's possessions**
- **Listen to and follow the instructions of all Meadowside adults**
- **Treat everyone with courtesy and try our best to be kind.**

Our Golden Rules posters are displayed throughout school to reinforce our expectations.

## Appendix 1

### House Points

#### How can you earn a house point?

- **By showing your Learning Powers** (ruby, emerald, sapphire and diamond)
- **Excellent examples of following the Golden Rules** (this replaces Golden Tickets)
- **A piece of high-quality work** (this acknowledges the hard work you are putting in)
- **Promoting our Sporting Values** (passion, self-belief, respect, honesty, determination and teamwork)
- **Being a positive member of our community** (giving something back to your school community and beyond)

#### What happens when you earn a house point?

You start with 10 tokens in your box. You take a token from your box and place it in your classroom house display tube.

For infants (and lunchtimes): you will receive a sticker to help remind you that you have earned a house point

#### What happens if you earn 10 house points?

On the day the house points are totalled – every two weeks – you get a raffle ticket from a member of staff in your class and exchange it for a prize. A member of staff will replenish your tokens.

#### What happens if you have not earned 10 house points?

Try your best to see if you can earn the remaining house points. You do not have to replenish your supply.

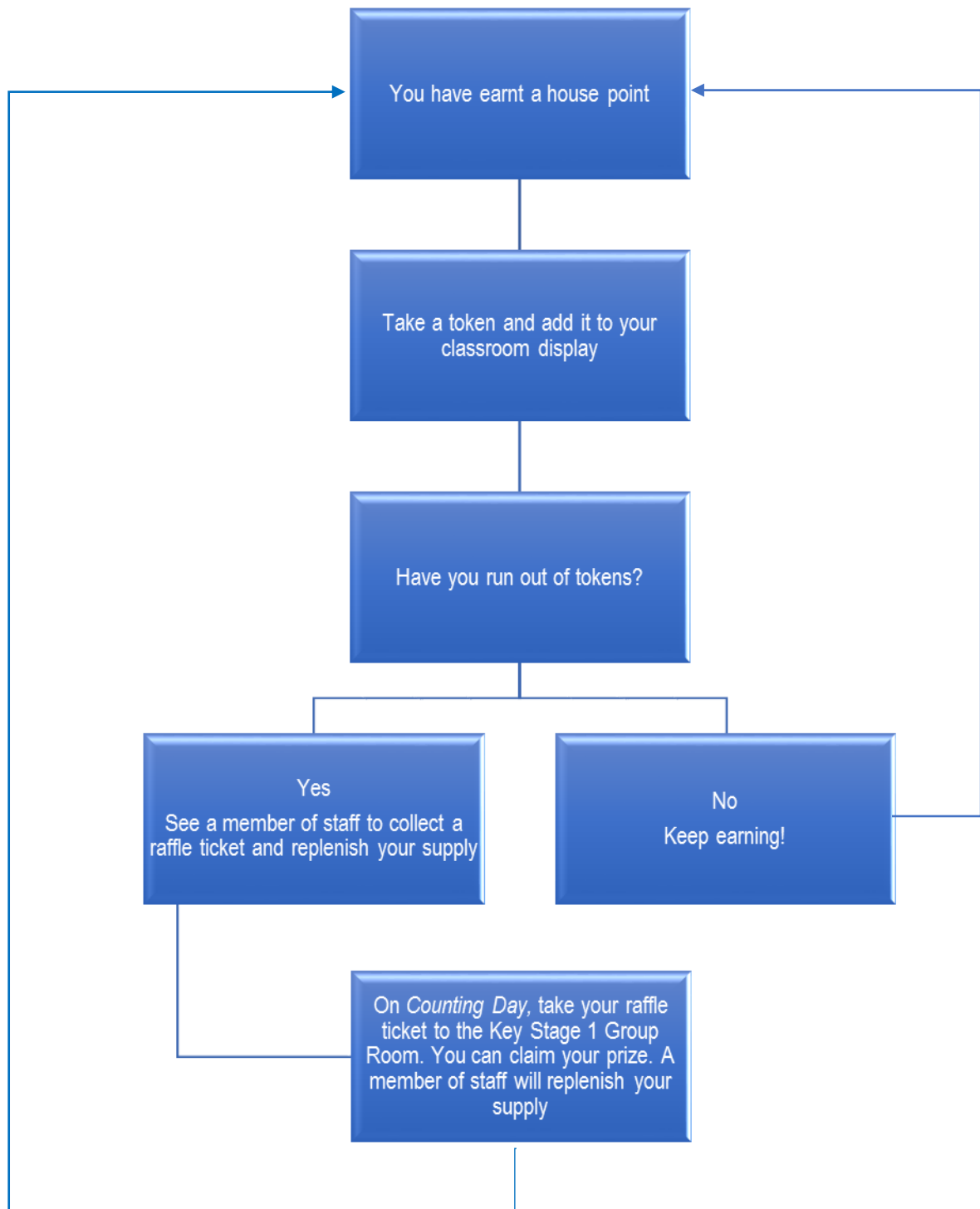
#### How often are house points totalled?

Every two weeks. House and Vice Captains will work together to count the totals. They will be published in the Friday Fortnightly and will appear on the display in the hall.

#### What happens if my house wins?

At the end of every term, the winning house will be given an opportunity to be recognised by our school community, for example, to be able to wear their favourite footwear for a day on the first day back after the weekend.

## House Points at Meadowside



At the end of every term, the winning house will be given an opportunity to be recognised by our school community, for example, to be able to wear their favourite footwear for a day on the first day back after the weekend!